

Pinnacle Update Requirement

From serial number 107400 and greater, Pinnacle Controller's have a slightly different restart functionality from previous units.

It is HIGHLY recommended by Industrial Control Links Inc. that customers use ScadaWorks 5.03b8801 or better for programming.

Explanation of Restart Behavior

If running ScadaWorks 5.03b87xx or older on the controllers of serial number 107400 or greater restart issues will occur if doing the following operations:

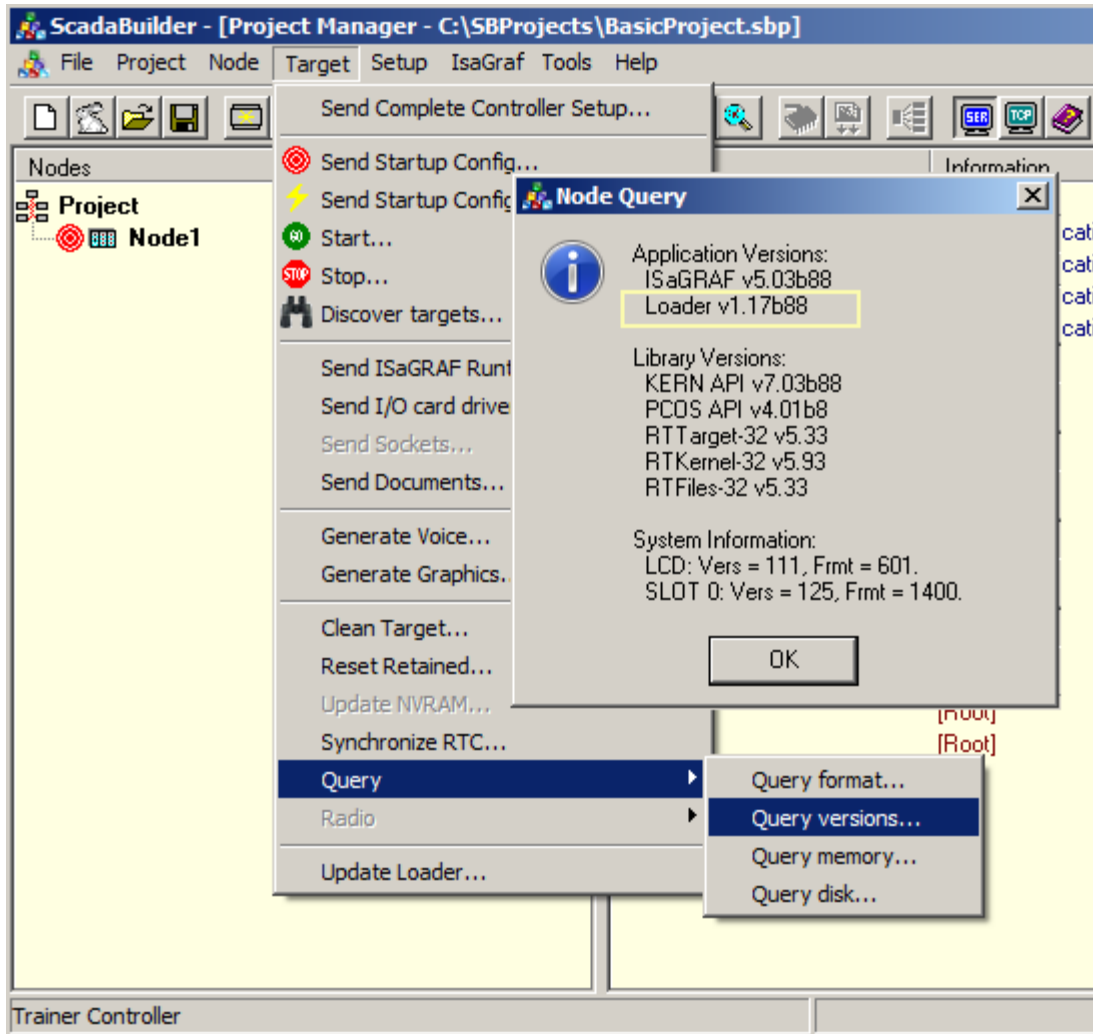
1. Kernel is currently running an application and a Target Complete Controller Setup... is invoked.
2. Kernel is currently running an application and the Node Settings | Target Configuration tab | Restart Target button is invoked.

Restart issues will NOT occur in the following conditions:

1. Power cycling the unit.
2. Reboot from a register that is mapped to Mappings | Reboot map: configuration.
3. Restarting when controller is in Loader Mode with a Target | Complete Controller Setup... or the Node Settings | Target Configuration tab Restart Target button.

Checking The Controller Requirement

To check if your unit requires the version of ScadaWorks above, connect to the unit as if you are doing development in ScadaBuilder Click on Target | Query | Query versions...



If the Loader version is v1.17b88 or greater, an upgrade of ScadaWorks to the latest version should be done to prevent the restart issues.

Please contact Industrial Control Links Inc. Technical Support with any questions or concerns.

support@iclinks.com

530 888-1800