

Running ScadaWorks in Windows 7, Windows 8 or Windows 10

User Access Control should be turned off or set at the lowest setting prior to doing this install. To change the setting go to Control Panel / User Accounts and access the User Account Control, then drag the setting slider all the way down. Apply the changes and reboot your computer.

ScadaBuilder and IsaGraf require that your user account have admin rights.

ScadaWorks consists of 3 programs:

1. ScadaBuilder.
2. IsaGraf 3.54 (for older non-Pinnacle ICL controllers only).
3. IsaGraf 5.20.

IsaGraf 3.54 gets installed with the same installer executable as ScadaBuilder, but will not run under Windows 7 (32 or 64 bit), Windows 8 or Windows 10. It is still necessary to install this program in order to install ScadaBuilder. This installation is automatic but will warn you that the C:\sawin folder will be deleted. If you have worked with the older ICL EtherLogics controllers in the past, then this where custom functions and function blocks were stored. You can back up this folder if you're not sure.

If you are programming older ICL-4300, Etherlogic, Etherlogic LC, Etherlogic Advanta, Etherlogic Integra, Etherlogic Ultima, ScadaFlex OPIO or ScadaFlex Ethernet models, you will need to run this software on a native XP computer so that ISaGRAF 3.54 can compile, download and run in debug. You may program the controller (downloading) using the Windows 7 XP Virtual Machine but may not be able to debug due to Microsoft Virtual Machine incompatibility to the ISaGRAF 3.54 Debugger.

Once the programs are installed, two programs should be set to run as administrator (even though you are logged in as administrator or are logged in with admin rights). These are "DPM.exe" and "Builder.exe".

The **DPM.exe** program is located here for Win 7 and Win 8 64 bit operating systems:

[C:\Program Files \(x86\)\ICS Triplex ISaGRAF\ISaGRAF Xpress 5.2\Bin](#)

And here for 32 bit operating systems:

[C:\Program Files\ICS Triplex ISaGRAF\ISaGRAF Xpress 5.2\Bin](#)

The **Builder.exe** program is located here for Win 7 and Win 8 64 bit operating systems:

[C:\Program Files \(x86\)\ICL\ScadaBuilder](#)

And here for 32 bit operating systems:

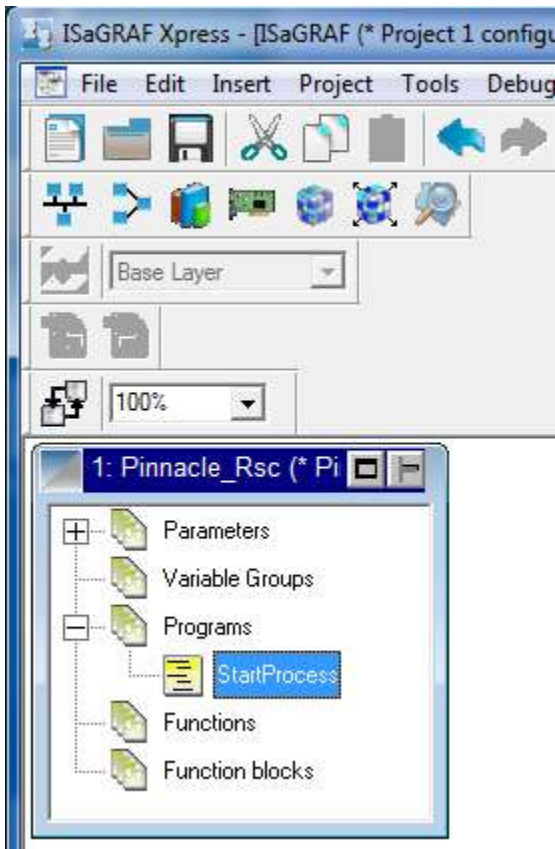
[C:\Program \ICL\ScadaBuilder](#)

Follow this procedure for setting the compatibility for each program listed above:

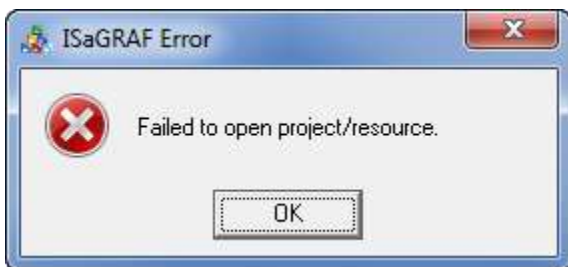
1. Locate the EXE file with Windows Explorer at the above location.
2. Right click it and go to properties, then to the compatibility tab.
3. Click on the button at the bottom that says "Change settings for all users"
4. Check the box at the bottom for "Run this program as an administrator".
5. Click Apply then OK.

6. Click OK to close the properties window.

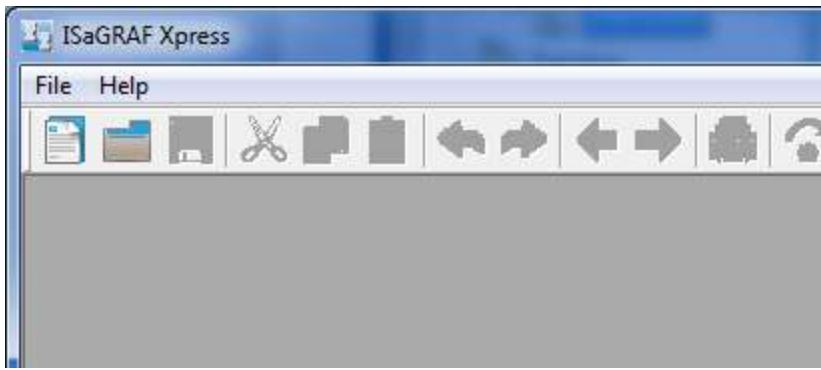
Calling the IsaGraf workbench from ScadaBuilder should result in the program opening with the project database loaded. If this is the case then you will see the node “box” with any IsaGraf programs listed inside of it:



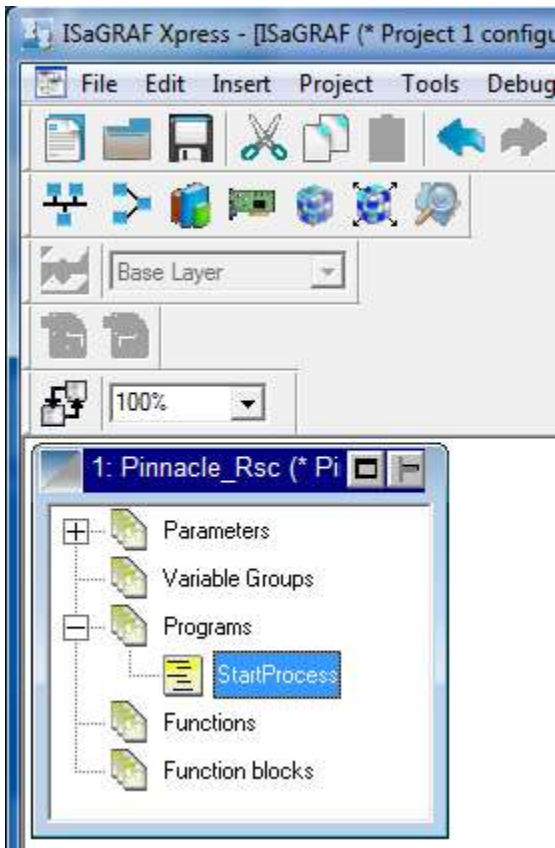
If IsaGraf opens without the project database loaded, then you will also get an error “:



If this happens then click OK to close the error, but leave the IsaGraf workbench open:



Then go back into ScadaBuilder and click the icon to open the IsaGraf workbench again. This time the IsaGraf workbench should open with the database loaded



Please contact our Technical Support Department if you still have any problems or questions.

530-888-1800 ext. 3

support@iclinks.com