

# HiBeam Startup Procedure

---

## Getting Started

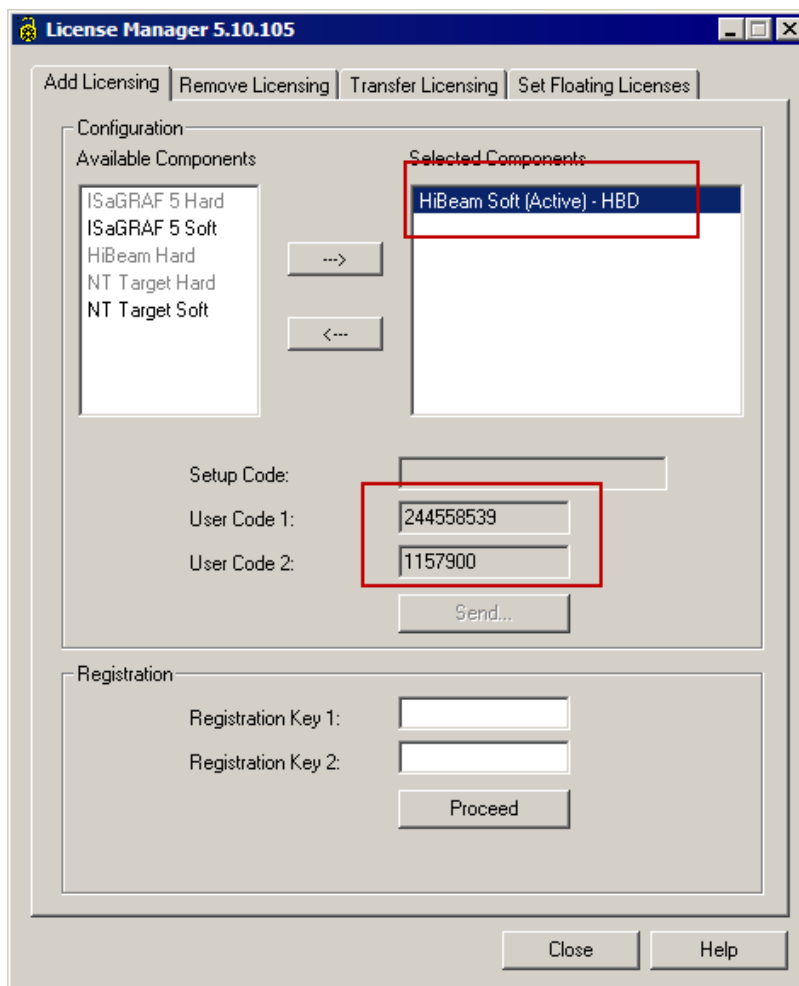
Install the ISaGRAF License Manager.

Install the HiBeam Software (available for download or on your ScadaWorks CD). This will give a 30 day demo package which can be registered at any time.

## HiBeam Registration

Run the ISaGRAF License Manager. It is most often located at Start | Programs | ICS Triplex Products | "Licensing ISaGRAF 5". It is sometimes installed in Start | Programs | ISaGRAF Xpress.

You should see a window like this:



Move the Hibeam Software license over to the “selected components” window. Select the “unlimited” license in the prompt.

You will need to send ICL support the two “User” numbers. It may take several days to get numbers back as they must come directly from ISaGRAF. You will get back the Registration Key 1 and Registration Key 2. Once entered, you will be licensed.

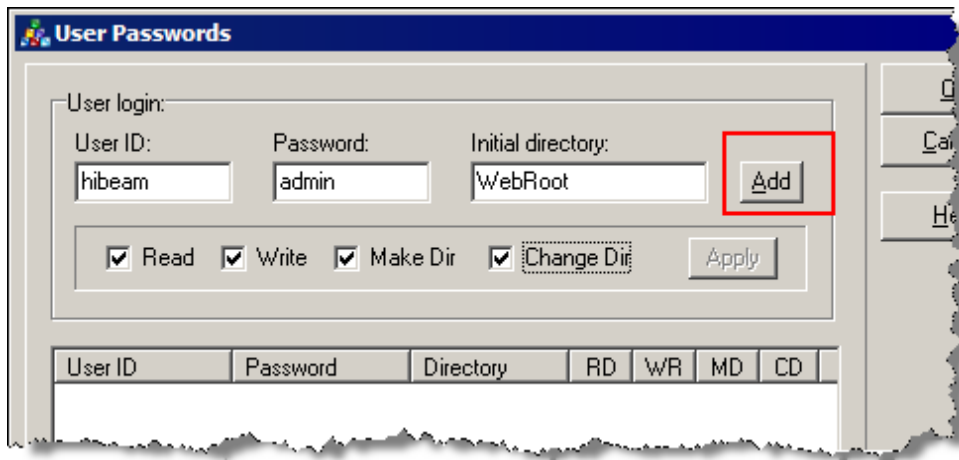
## Starting a Hibeam Project

Creating a new project using ScadaWorks (see Pinnacle Quick Start Guide). Make a note of where the project resides as you will need to know this to reference the HiBeam project to your application. Have the host node ready and connected with Ethernet and FTP enabled and the Pinnacle Quick Start Guide instructs you to do. This is critical for setting up a HiBeam hosting controller.

## Setting Up Accounts

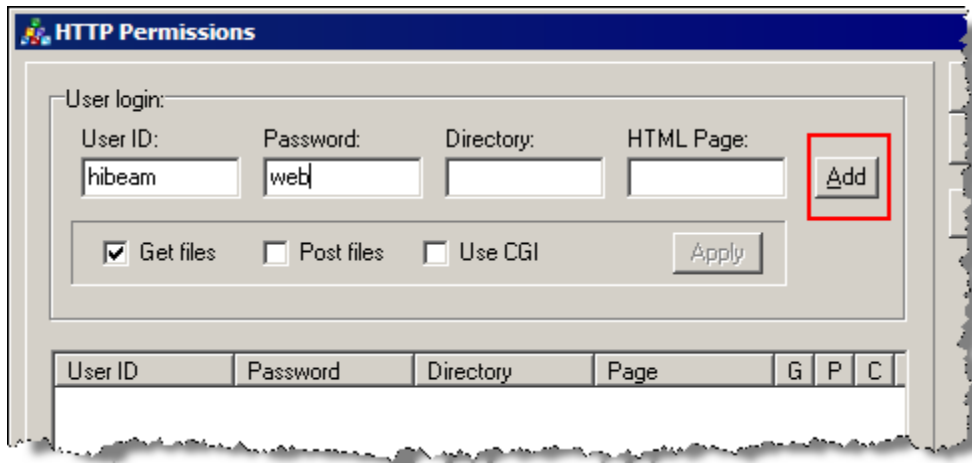
Open the Node | Settings dialog and click on the ISaGRAF/FTP/HTTP/Admin tab. Here we need to do two things, setup an FTP account for transferring files and turn on the HTTP server.

Make sure that FTP is checked and click the Passwords button.



Add an account that has the Initial Directory of WebRoot (this is case sensitive). Make sure that all permissions are on.

Enable HTTP by checking its box and click on the Permissions button.



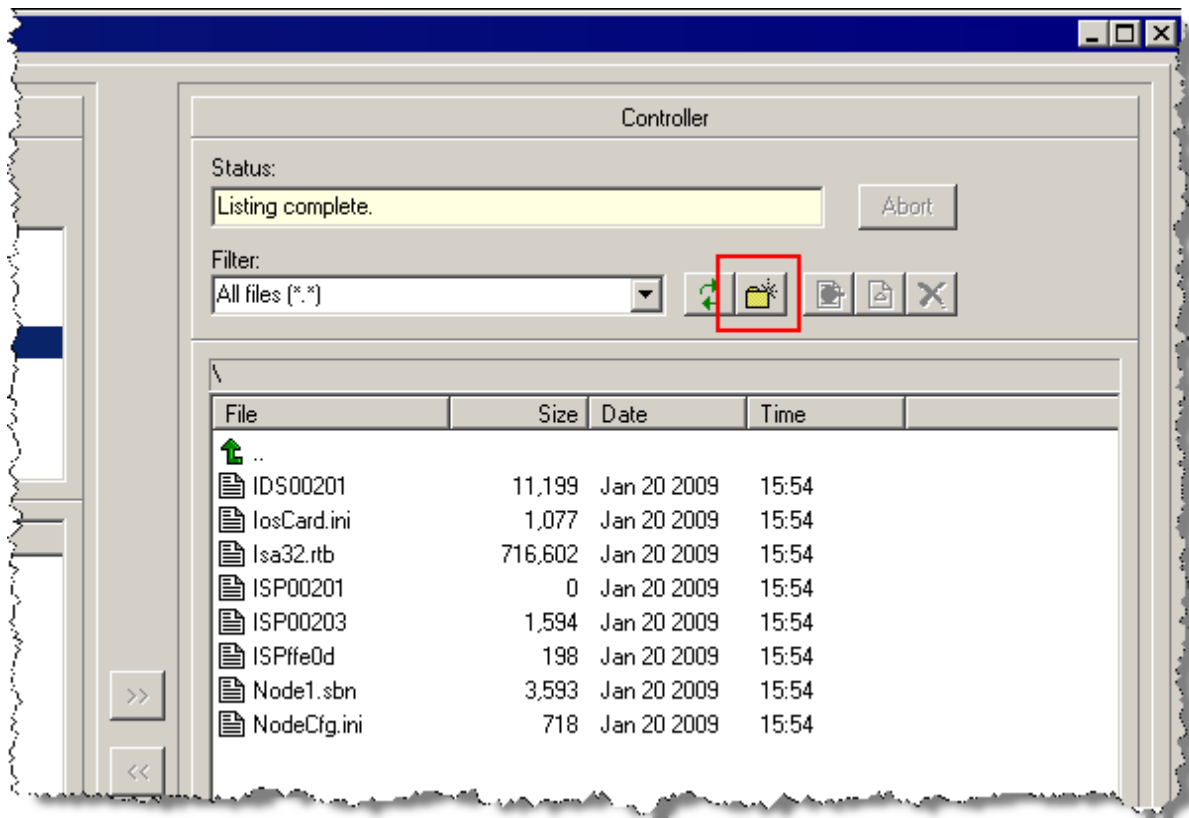
Enter a new account (this will secure your web pages and require a login. Don't forget to click the Add button.

Click the Apply to Target button and Restart Target

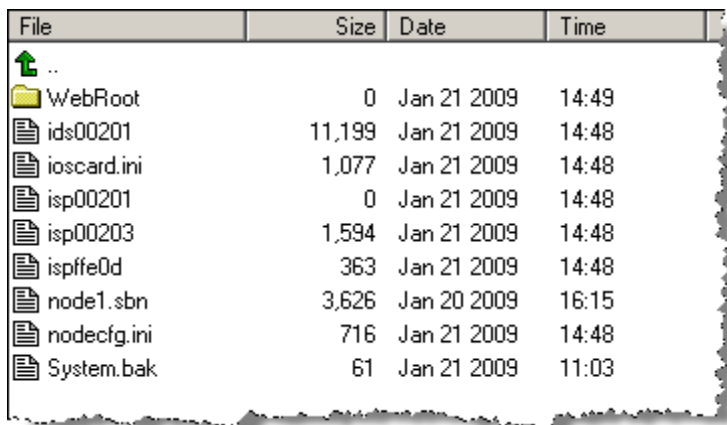
## Setting Up the Directory Structure

**Note:** As of version 5.00b35 of ScadaWorks, these directories are created automatically. You may skip the directory creation steps in this section.

Click Ok and click the Tools | File Transfer menu.



Click on the New Folder button and enter the directory WebRoot. These names ARE CASE SENSITIVE. The screen should refresh and WebRoot should show at the top:



Double click on the WebRoot folder.

Using New Folder button, create two more directories, hds and hgapp. Your screen should look exactly like this:

File	Size	Date	Time
..			
.	0	Jan 21 2009	14:49
..	0	Jan 21 2009	14:49
hds	0	Jan 21 2009	14:49
hgapp	0	Jan 21 2009	14:49

Double click on the hgapp directory. Using the New Folder button, create a script, image and applet directory. Your directories should look exactly like this:

File	Size	Date	Time
..			
.	0	Jan 20 2009	16:03
..	0	Jan 20 2009	16:03
applet	0	Jan 20 2009	16:05
image	0	Jan 20 2009	16:05
script	0	Jan 20 2009	16:05

Double click on the applet directory and using the New Folder button, create a directory called animated and a directory called util. Your screen should look exactly like this:

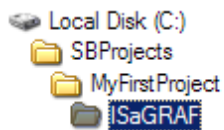
File	Size	Date	Time
..			
.	0	Jan 20 2009	16:05
..	0	Jan 20 2009	16:05
animated	0	Jan 20 2009	16:06
util	0	Jan 20 2009	16:06

Close the FTP Transfer window.

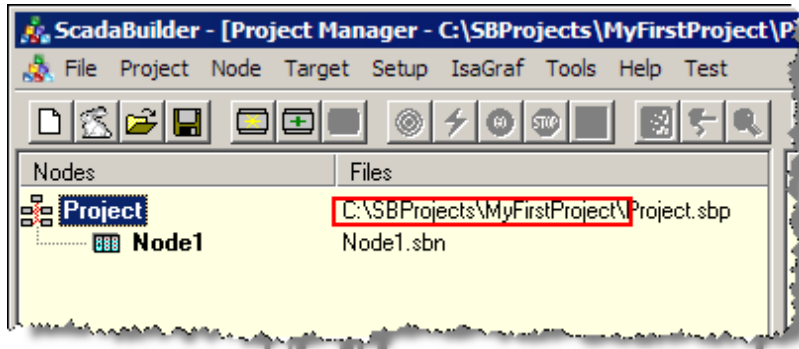
## Setting Up a HiBeam Screen Builder Project

Open the HiBeam Screen Builder located at Start | Programs | ICS Triplex Products | HiBeam Screen Builder x.x | HiBeam Screen Builder. (your location may vary slightly from this).

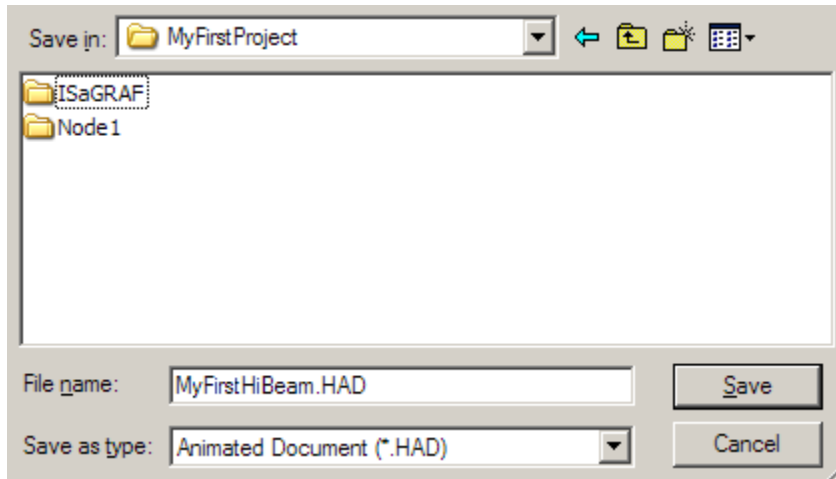
Select the File | New menu and browse to the ISaGRAF project directory within the ScadaBuilder Project. If you followed the Pinnacle Quick Start Guide to the letter, it would be located at this path:



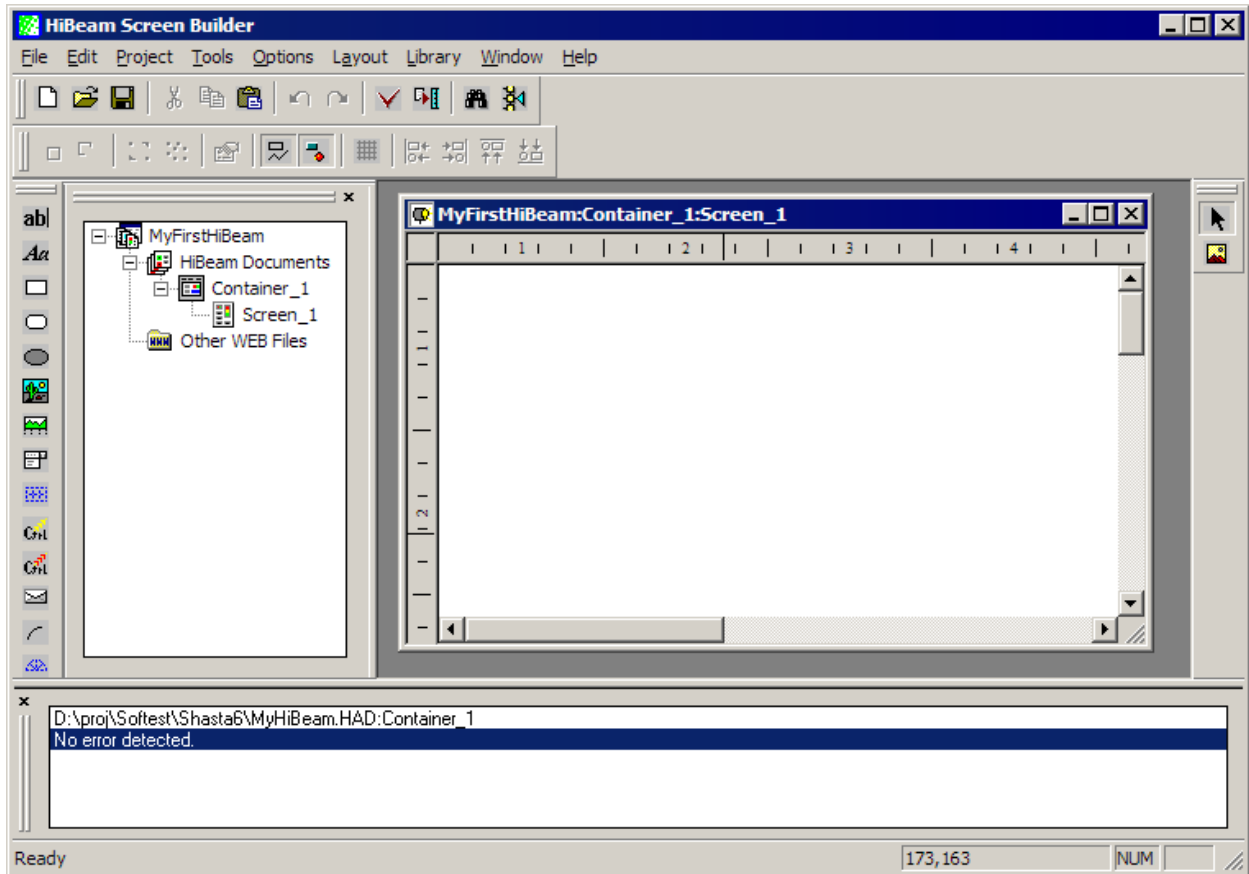
You can find the path of your project in the ScadaBuilder Workbench here:



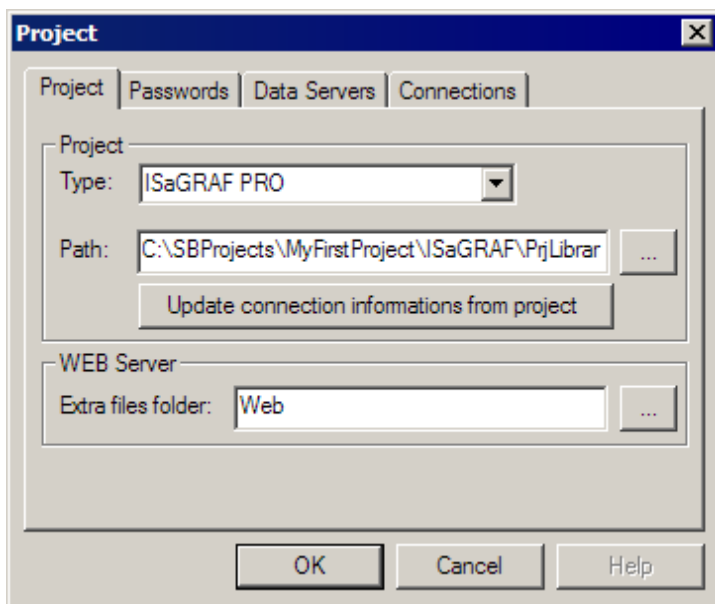
Your HiBeam Project should be located in the root of the ScadaBuilder project tree. Give the project a name and leave the .HAD extension on the file name like so:



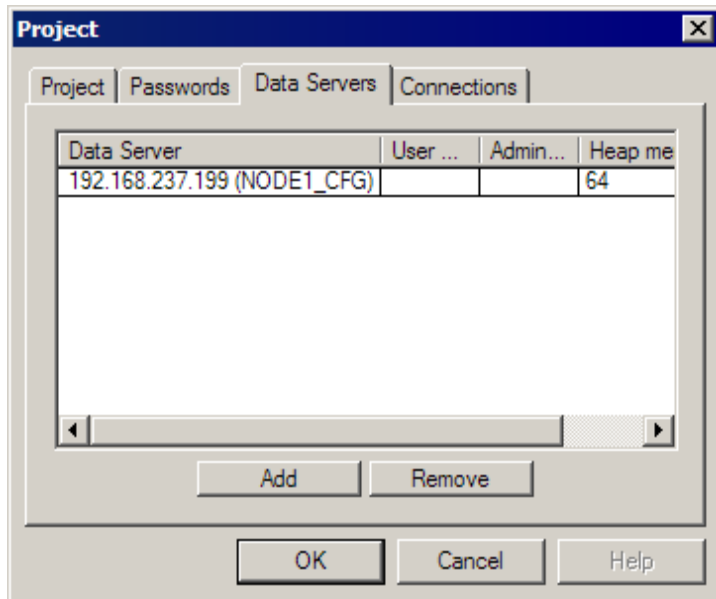
You should end up with a blank project in the HiBeam Screen builder:



Next, we need to tie this HiBeam project with its ISaGRAF project. To do this, select the Project | Settings menu. Browse to the ISaGRAF directory within the ScadaBuilder project directory shown above:




The path chosen here is: C:\SBProjects\MyFirstProject\ISaGRAF\PrjLibrary.mdb. Click on the Update connection informations from project button. Check the Data Servers tab to verify the IP address and the NodeCfg applied to the target:

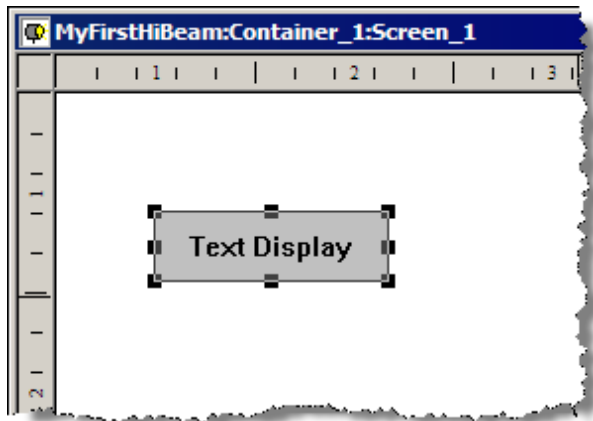


This connection will automatically import the tag database for that application. We can start building screens.

## Building Our First Screen

Select the Button  tool on the left of the HiBeam Screen Builder:

Immediately drag a rectangle in the blank form page:



You can size this to your liking after inserting it as well. Right click on the control and select Properties.




There are many configurations here; we are interested in initializing the variable that this control will be tied to. Click on the Variables tab and click the ellipsis:

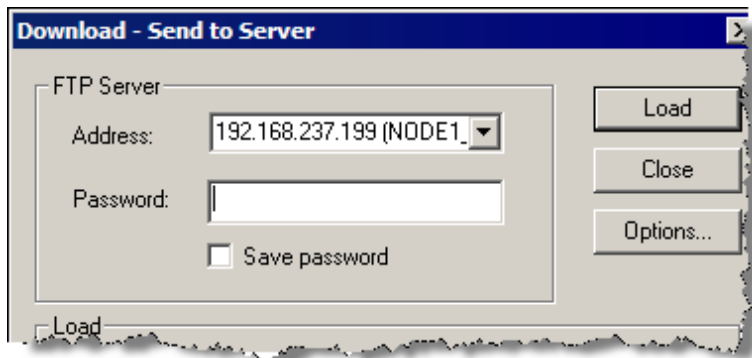
Parameter	Variable	Origin
Input Text (Input)		z: NODE1_RSC (NODE1_CFG)

Browse to the cold\_junction\_temp variable and select it. Click OK.

## Downloading Our Screens

Click on the Download button  or select the Project | Send to Server... menu.

Select your address that concurs with your controller:



Click on the Options... button.

Make sure that your options are configured like this for the first download. The User name must match the FTP user name we entered earlier. All the check boxes will be checked for the first download. After the first download, you can uncheck the Send JAVA classes to speed up the download. Each unit must have the JAVA classes on it for HiBeam to function.

Download

- Send JAVA classes
- Send all images (GIF,JPG...)
- Close 'Download' box when transfer is complete
- Send Extra Web files

OK  
Cancel  
Default

FTP

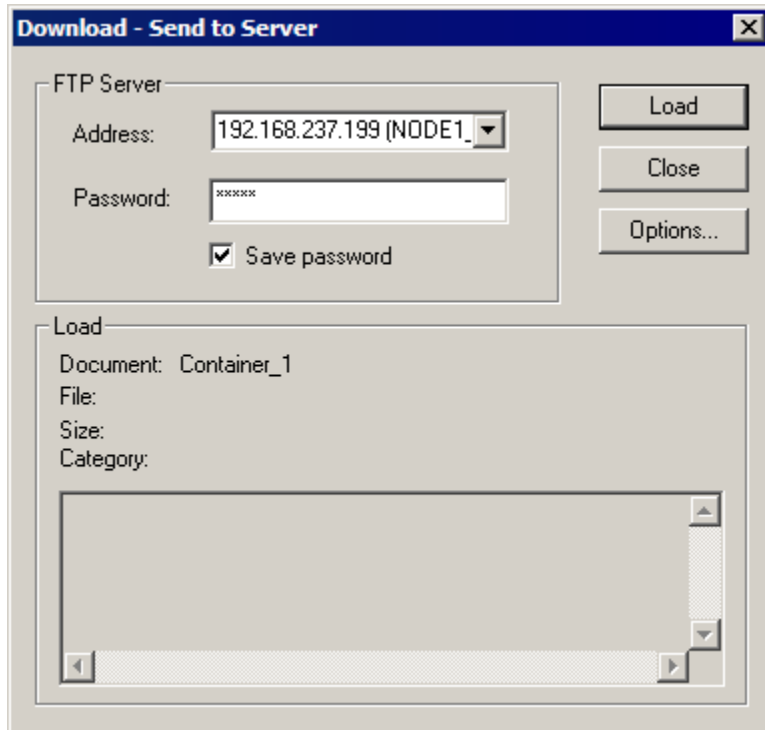
User name:

FTP Folders

HTML pages:	<input type="text" value="hgapp"/>
Screens:	<input type="text" value="hgapp/script"/>
Images:	<input type="text" value="hgapp/image"/>
Server:	<input type="text" value="hds"/>
JAVA:	<input type="text" value="hgapp/applet/animated"/>
Messages:	<input type="text" value="hgapp/applet/util"/>
Extra Web files:	<input type="text" value="hgapp"/>

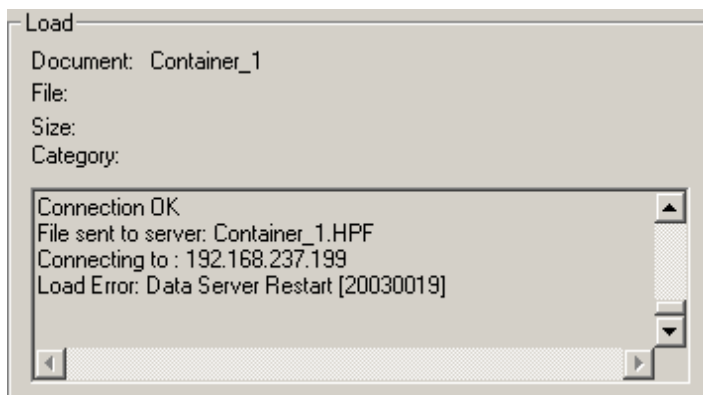
Click OK

Enter the password as configured in the FTP account earlier in the document (the password admin is shown here):



Click Load.

You will see a significant number of files download to the unit. This is normal. It will end on an error but the error is harmless and will not affect operation:

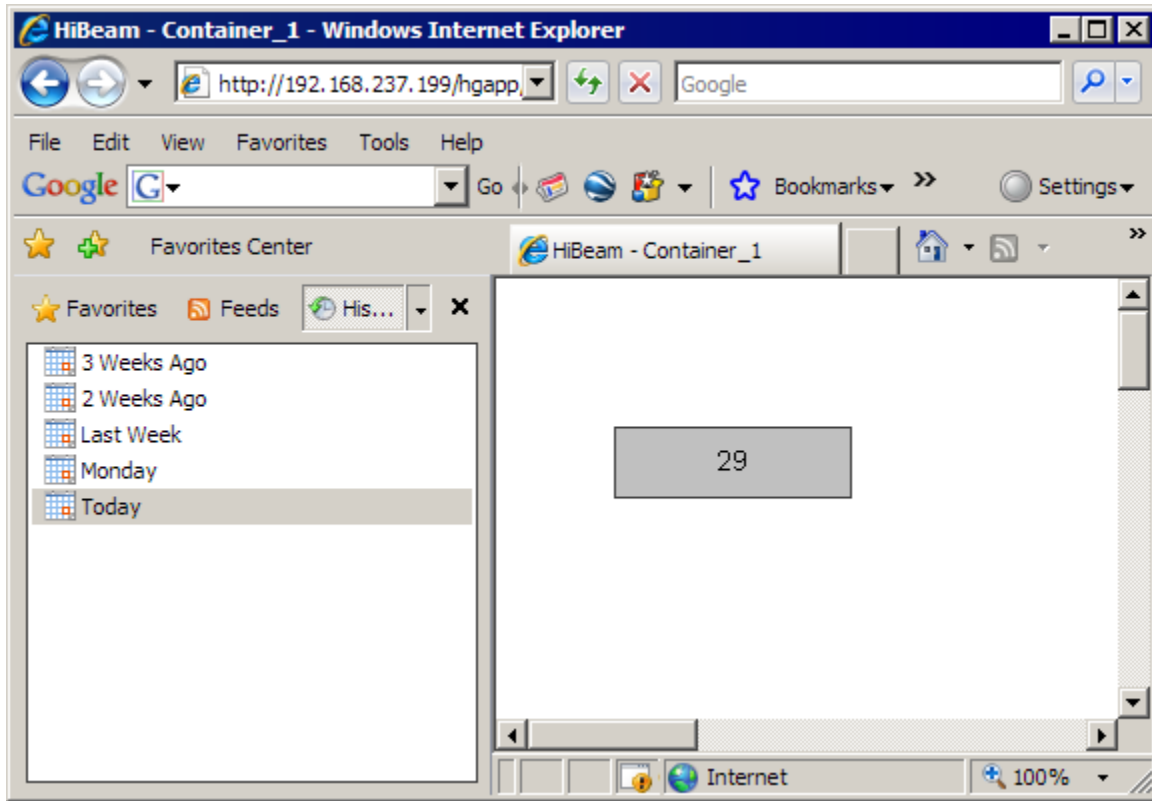


## Accessing Our New Page From a Web Browser

Your application will now be accessible from your browser. Enter the path:

[http://192.168.237.199/hgapp/container\\_1.html](http://192.168.237.199/hgapp/container_1.html) (substitute your IP address if necessary). The browser will ask you for a user name and password. Use the one we configured earlier: Username = hibeam and Password = web .

After entering the user name and password, you should see the screen that you have built with the temperature in integer form in your browser like so:



Feel free to start adding controls to your screen, and then more screens! You can even insert your own graphics!